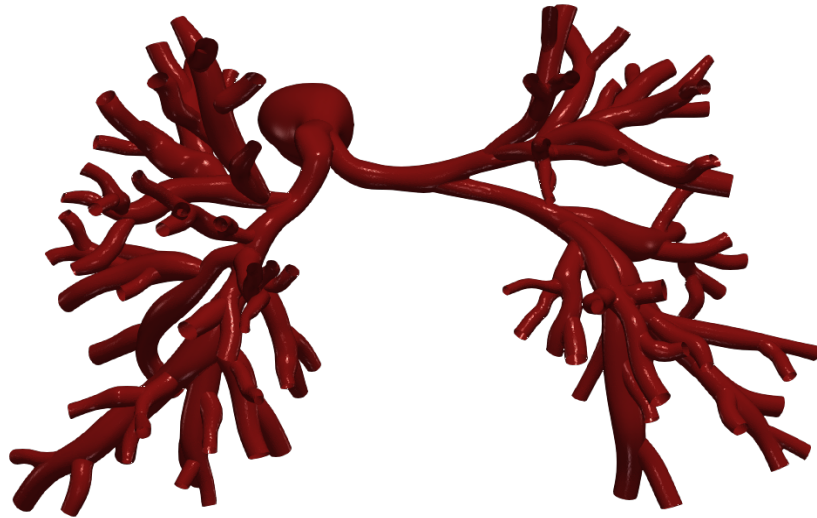


# Vascular Model Repository

## Specifications Document



## 0118\_H\_PULM\_WS

Legacy Name: WS1\_SU0267\_prestent

Model added: 3 Aug 2022

<b>Species</b>	Human
<b>Anatomy</b>	Pulmonary
<b>Disease</b>	Williams Syndrome
<b>Procedure</b>	None

# Clinical Significance and Background

## Pulmonary

Pulmonary circulation involves blood flowing from the right ventricle of the heart into the pulmonary arteries. From the pulmonary arteries, the blood then reaches the lungs, performs a gas exchange, and then continues to the pulmonary veins which then lead to the left atrium of the heart.

By definition, an artery is a blood vessel that carries blood away from the heart. This usually means arteries carry oxygenated blood to the rest of the body, but since the pulmonary arteries are transporting blood from the right side of the heart to the lungs to perform respiration, that makes the pulmonary arteries the only arteries in the body that carry deoxygenated blood. Similarly, the pulmonary veins, which carry blood that has been freshly oxygenated from the lungs back to the heart, are the only veins that carry oxygenated blood.

## Williams Syndrome

Williams syndrome, also known as Williams-Beuren syndrome, is a rare genetic disorder characterized by growth delays before and after birth (prenatal and postnatal growth retardation), short stature, a varying degree of mental deficiency, and distinctive facial features that typically become more pronounced with age. Newborns with Williams syndrome have characteristic elfin-like facial features including an unusually small head (microcephaly), full cheeks, an abnormally broad forehead, puffiness around the eyes and lips, a depressed nasal bridge, broad nose, and/or an unusually wide and prominent open mouth.

Congenital heart defects (CHD) occur in approximately 75 percent of children with Williams syndrome. The most frequent defect is supravalvular aortic stenosis, a condition characterized by the narrowing of the aorta above the aortic valve. Additional congenital heart defects associated with Williams syndrome may include pulmonary artery stenosis, and/or septal defects. Abnormally high blood pressure (hypertension) is also common in adults with this disorder.

## Clinical Data

### General Patient Data

Age (yrs)	0.63
Sex	Male

### Specific Patient Data

Heart Rate (bpm)	125
BSA (m <sup>2</sup> )	0.34
Cardiac Index (L/min/m <sup>2</sup> )	3.59
Wedge Pressure (mmHg)	18
MPA pressures: systolic/diastolic (mmHg)	125/32
RPA pressures: systolic/diastolic (mmHg)	19/11
RPA mean pressure (mmHg)	15
LPA pressures: systolic/diastolic (mmHg)	27/21
LPA mean pressure (mmHg)	25

## Notes

Model of a patient suffering from peripheral pulmonary stenosis from Williams syndrome. This model is before any in-silico stenting procedures have been done. \n\nThe corresponding model with in-silico generated stents can be found in the VMR as 0124\_H\_PULM\_WS. \n\nSee [paper](#) for more details. See below for information on the image data.

**Image Modality:** CT/MR

**Image Type:** VTI

**Image Source:** Lucille Packard Children's Hospital

## Publications

See the following publications which include the featured model for more details:

Lan, I. S., Yang, W., Feinstein, J. A., Kreutzer, J., Collins, R. T., Ma, M., ... & Marsden, A. L. (2022). Virtual Transcatheter Interventions for Peripheral Pulmonary Artery Stenosis in Williams and Alagille Syndromes. *Journal of the American Heart Association*, 11(6), e023532.  
<http://www.doi.org/10.1161/JAHA.121.023532>

# License

Copyright (c) Stanford University, the Regents of the University of California, Open Source Medical Software Corporation, and other parties.

All Rights Reserved.

Permission is hereby granted, free of charge, to any person obtaining a copy of this data to use the data for research and development purposes subject to the following conditions:

The above copyright notice and the README-COPYRIGHT file shall be included in all copies of any portion of this data. Whenever reasonable and possible in publications and presentations when this data is used in whole or part, please include an acknowledgement similar to the following:

"The data used herein was provided in whole or in part with Federal funds from the National Library of Medicine under Grant No. R01LM013120, and the National Heart, Lung, and Blood Institute, National Institutes of Health, Department of Health and Human Services, under Contract No. HHSN268201100035C"

AND/OR

N.M. Wilson, A.K. Ortiz, and A.B. Johnson, "The Vascular Model Repository: A Public Resource of Medical Imaging Data and Blood Flow Simulation Results," J. Med. Devices 7(4), 040923 (Dec 05, 2013) doi:10.1115/1.4025983.

AND/OR

Reference the official website for this data: [www.vascularmodel.com](http://www.vascularmodel.com)

THE DATA IS PROVIDED "AS IS", WITHOUT WARRANTY OF ANY KIND, EXPRESS OR IMPLIED, INCLUDING BUT NOT LIMITED TO THE WARRANTIES OF MERCHANTABILITY, FITNESS FOR A PARTICULAR PURPOSE AND NONINFRINGEMENT. IN NO EVENT SHALL THE AUTHORS OR COPYRIGHT HOLDERS BE LIABLE FOR ANY CLAIM, DAMAGES OR OTHER LIABILITY, WHETHER IN AN ACTION OF CONTRACT, TORT OR OTHERWISE, ARISING FROM, OUT OF OR IN CONNECTION WITH THE DATA OR THE USE OR OTHER DEALINGS IN THE DATA.