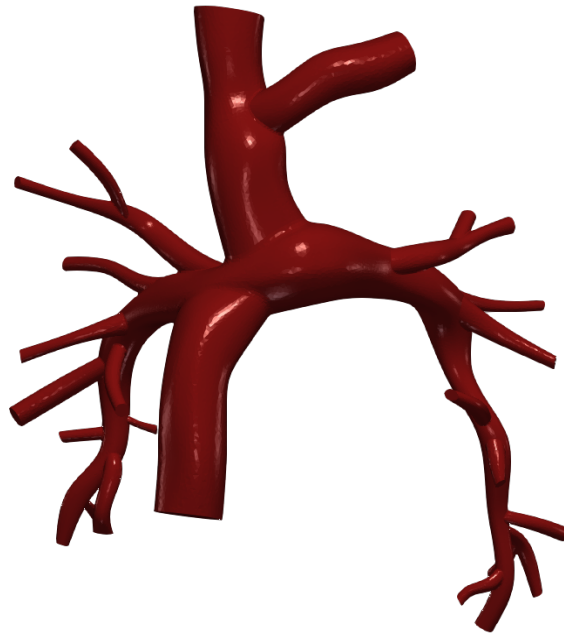


Vascular Model Repository

Specifications Document



0064_H_PULMFON_SVD

Legacy Name: 0125_0001

Model added: 27 Dec 2021

Species	Human
Anatomy	Pulmonary Fontan
Disease	Single Ventricle Defect
Procedure	Fontan

Clinical Significance and Background

Pulmonary Fontan

The pulmonary arteries are the blood vessels responsible for transporting deoxygenated blood to the lungs to perform respiration. A normal pulmonary anatomy involves the main pulmonary artery (MPA) trunk leaving the right ventricle of the heart which then branches off into the left and right pulmonary arteries which then continue to fractally branch towards the lungs. However, after the Fontan procedure (an open-heart surgery done on babies with congenital heart defects) the anatomy of the pulmonary system is slightly modified. The main pulmonary artery trunk is not present. Instead, the superior vena cava (SVC) and inferior vena cava (IVC) are directly connected to the left and right pulmonary arteries in a 4-way intersection configuration. This is done so that deoxygenated blood coming from the upper body (through the SVC) and deoxygenated blood coming from the lower body (through the IVC) flow directly to the lungs without passing through the heart to allow for the heart to focus solely on pumping oxygenated blood from the lungs to the rest of the body.

Single Ventricle Defect

A single ventricle defect (SVD) is a type of heart defect that a child is born with. It occurs when one of the two pumping chambers in the heart, called ventricles, is not large enough or strong enough to work correctly. In some cases, the chamber might be missing a valve. Single ventricle defects are rare, affecting only about five out of 100,000 newborns. They are also one of the most complex heart problems, usually requiring at least one surgery. There are several types of single ventricle defects which include but are not limited to: tricuspid atresia, hypoplastic left heart syndrome (HLHS), mitral valve atresia (usually associated with HLHS), single left ventricle, double inlet left ventricle (DILV), double outlet right ventricle (DORV), pulmonary atresia with the intact ventricular septum (PA/IVS), and atrioventricular canal defect (AV Canal).

Fontan

The Fontan procedure is a type of open-heart surgery. Children who need this surgery usually have it when they are 18 - 36 months old. The Fontan procedure is done for children who are born with heart problems like hypoplastic left heart syndrome (HLHS), tricuspid atresia, and double outlet right ventricle, and depending on the heart problem, children may need the Norwood procedure and Glenn procedure before the Fontan surgery.

After the Fontan procedure, the blood from the lower body goes directly to the lungs. The blood with high oxygen goes into the heart. This way the single ventricle only pumps blood to the body and only pumps blood with high oxygen to the body. There is no more mixing of oxygen-rich blood and oxygen-poor blood.

During the Fontan procedure, the surgeon first disconnects the inferior vena cava (IVC) from the heart and connects it to the pulmonary artery using a conduit (tube). Then, the surgeon makes a small hole between the conduit and the right atrium. This hole (or fenestration) lets some blood still flow back to the heart. It prevents too much blood from flowing to the lungs right away, so they have time to adjust. Doctors can close the fenestration later by doing a cardiac catheterization procedure.

Clinical Data

General Patient Data

Age (yrs)	5
Sex	Male

Specific Patient Data

BSA (m ²)	0.86
Height (m)	1.15
Weight (kg)	23.4

Notes

See below for information on the image data.

Image Modality: MR

Image Type: VTI

Image Source: STAN

Image Manufacturer: GE MEDICAL SYSTEMS

Publications

There are no publications associated with the featured model.

License

Copyright (c) Stanford University, the Regents of the University of California, Open Source Medical Software Corporation, and other parties.

All Rights Reserved.

Permission is hereby granted, free of charge, to any person obtaining a copy of this data to use the data for research and development purposes subject to the following conditions:

The above copyright notice and the README-COPYRIGHT file shall be included in all copies of any portion of this data. Whenever reasonable and possible in publications and presentations when this data is used in whole or part, please include an acknowledgement similar to the following:

"The data used herein was provided in whole or in part with Federal funds from the National Library of Medicine under Grant No. R01LM013120, and the National Heart, Lung, and Blood Institute, National Institutes of Health, Department of Health and Human Services, under Contract No. HHSN268201100035C"

AND/OR

N.M. Wilson, A.K. Ortiz, and A.B. Johnson, "The Vascular Model Repository: A Public Resource of Medical Imaging Data and Blood Flow Simulation Results," J. Med. Devices 7(4), 040923 (Dec 05, 2013) doi:10.1115/1.4025983.

AND/OR

Reference the official website for this data: www.vascularmodel.com

THE DATA IS PROVIDED "AS IS", WITHOUT WARRANTY OF ANY KIND, EXPRESS OR IMPLIED, INCLUDING BUT NOT LIMITED TO THE WARRANTIES OF MERCHANTABILITY, FITNESS FOR A PARTICULAR PURPOSE AND NONINFRINGEMENT. IN NO EVENT SHALL THE AUTHORS OR COPYRIGHT HOLDERS BE LIABLE FOR ANY CLAIM, DAMAGES OR OTHER LIABILITY, WHETHER IN AN ACTION OF CONTRACT, TORT OR OTHERWISE, ARISING FROM, OUT OF OR IN CONNECTION WITH THE DATA OR THE USE OR OTHER DEALINGS IN THE DATA.